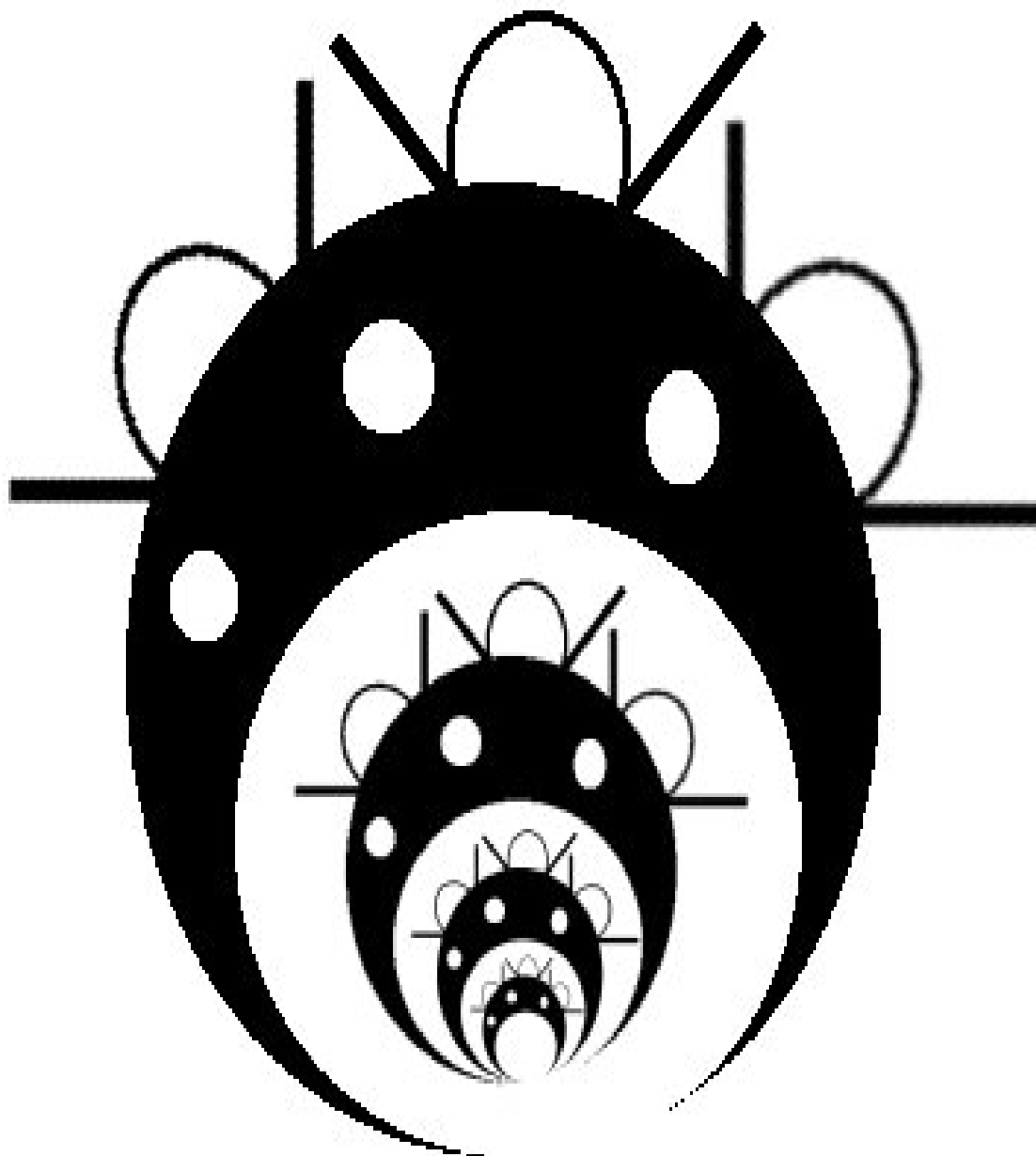


Effortless Internet for Beginners



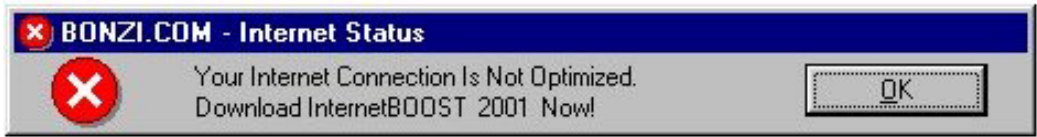
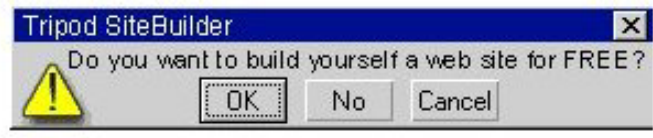
I
N
T
E
R
N
E
T

Written By: Traci Cameron

These are banner advertisements



Some advertising banners appear to be in your way.
Clever advertising, but could irritate the user.

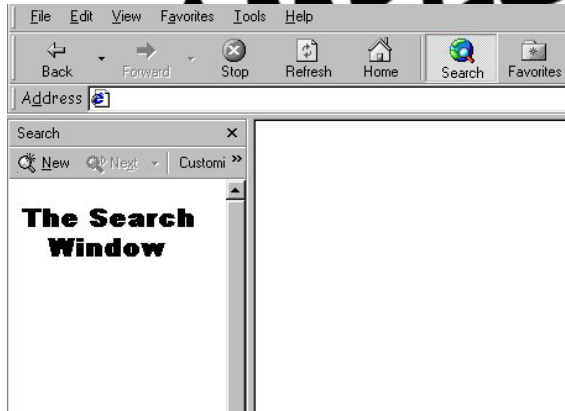


1. You are on the page for CNN weather. You will see a form on this page where you can enter in your zip code to find out local weather information. There are three different ways you can search weather: A) by zip code, B) by state, C) by world region.
2. Type your zip code in the white box under the text **Enter your U.S. Zip Code**. Then click the **GO** button. You will be taken to a page displaying your local weather and four day forecast.

Lincoln, NE				Current Conditions	
Four Day Forecast				10 a.m. (local), Mar. 10	
Fri.	Sat.	Sun.	Mon.	mostly cloudy	
snow	sunny	showers	p/cloudy	Temp: 31 F, 0 C	
HIGH	HIGH	HIGH	HIGH	Rel. Humidity: 63%	
39 F	51 F	55 F	53 F	Wind: N at 13 mph (20 kph)	
3 C	10 C	12 C	11 C	Pressure: n/a	
LOW	LOW	LOW	LOW	Sunrise: 7:10 a.m.	
19 F	25 F	27 F	28 F	Sunset: 6:09 p.m.	
-7 C	-3 C	-2 C	-2 C	Related Links	
				<ul style="list-style-type: none"> Sports Teams: Lincoln Travel: Nebraska 	

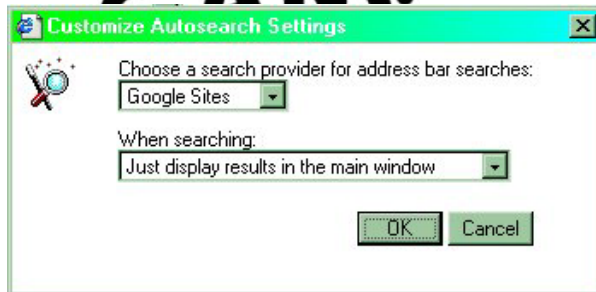
Changing the Address Bar Search Engine

1. Click the **Search** button in the Internet Explorer toolbar.
On the left side of the screen, a Search window will appear.



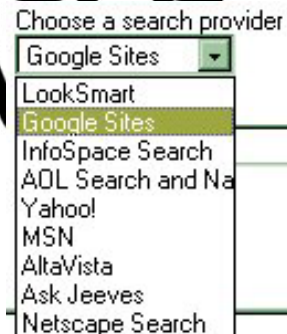
2. Click the **Customize** button within the search window. The **Customized Search Settings** screen will appear. Within the screen you will see many different search engines you can use to perform Internet searches.
3. Click on the **Autosearch Settings** button. The **Customize Autosearch Settings** screen will appear.

Autosearch settings

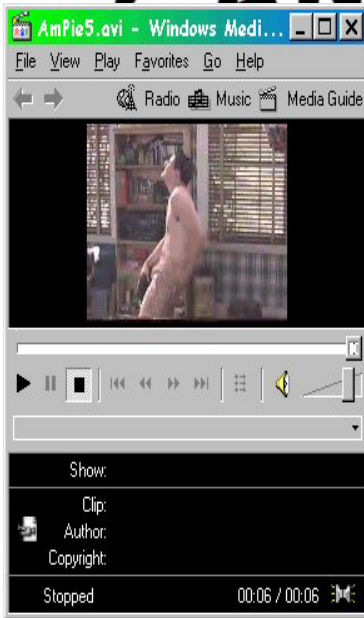


4. Click the down arrow in the text box beneath the words **Choose a search provider for address bar searches**.

A listing of all available search engines will appear.

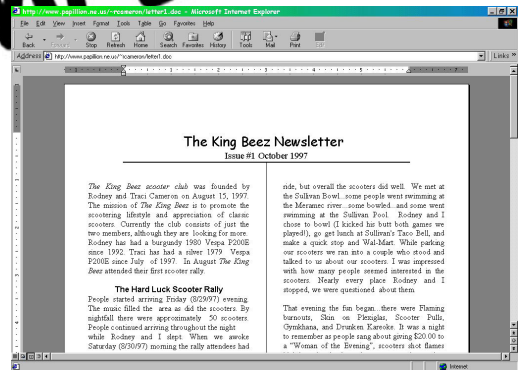


1. Use the scroll bar if you have to within the list to find the location you would like to save the download to.
2. Click the **Save** button to verify the saving location and start the download process.



There are some files that can be ran directly from their location using software that is installed with Windows. For example: if you were going to download a short movie clip and the file had a .mov or .avi extension – the computer recognizes these extensions and knows to bring up the files using the **Windows Media** program.

If you were going to download a document and the file had a .doc extension – the computer would recognize this extension and know to bring up the file using either the **Microsoft Word** or **WordPad** program.



What is Shareware?

Shareware is (some of it downloadable) software that is free. With some shareware the program may lose some of its functionality after a certain amount of time (unless you purchase the program!). With some shareware programs you aren't required to buy the program at all (even though it may prompt you), but with purchase you may receive upgrades to the program. Other Shareware programs have no time limit nor do they disable any functionality.

What is Freeware?

Freeware is (some of it downloadable) software that is absolutely free. Freeware is free to use however you want to, but if you distribute it, the rules of freeware usually state that it is to be distributed in its original form.

Take Note! Take Note! Take Note!

It isn't always necessary to type in **http://** prior to the web address in the address box. If you simply type in what follows the **//** you will get to the website just as well. By default, Internet Explorer assumes you are looking for a http protocol unless you specify otherwise.

Uniform Resource Locators

The address bar contains information about the website's location in cyberspace. Most addresses appear in the following format **http://www.website.com**. The web address is the **URL (Uniform Resource Locator)**. It's sometimes referred to as a web address or location. Although there are exceptions, a vast majority of them start with **www** and end with:

- **.com** - Business (commercial)
- **.net** - Business (network)
- **.org** - Churches, non-profit companies (organization)
- **.mil** - Military
- **.gov** - Government
- **.edu** - Education
- You'll also see **.uk** (United Kingdom) **.au** (Australia) **.jp** (Japan) **.nl** (Netherlands) and many others.

The name of a Web site on the Internet which identified the electronic (and sometimes geographical) location of the computer. Domain names are registered with a central organization known as the *InterNIC* which ensures that only one computer on the Internet has that name.

- **.aero** - aerospace or air transport related
- **.biz** - restricted to businesses
- **.coop** - a cooperative (i.e. credit unions)
- **.info** - open to all
- **.museum** - a museum
- **.name** - personal registrations by name

Natural Language Searches

Natural language searches are searches that can be performed by typing in questions and entire sentences into the search engine that allows you to do this is Ask Jeeves®.

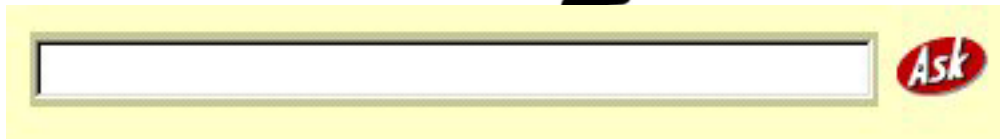
Example: Instead of typing in the standard search method (Boolean) explained earlier of

sun AND earth AND “average distance”

you could, in natural language, type

What is the sun’s distance from earth?

1. Left click inside the Internet Explorer address bar to highlight the current URL.
2. Type in the URL **www.askjeeves.com**. Since the old URL is selected (highlighted) the new URL will be typed directly over it.



3. Left click inside the question box. A blinking cursor will appear letting you know that it is okay for you to type.
4. Type in the following: *How do I buy a car online?*

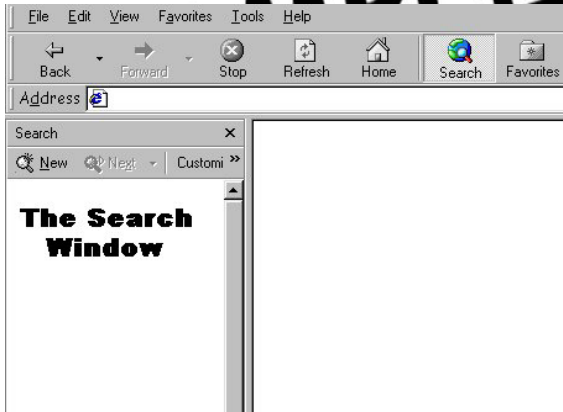


Ask Jeeves® may come up with several more questions (similar to yours!) that will help to narrow the search. You could ask for a specific car model, used or new, reviews and road tests, or where to find popular car websites.

Changing the Address Bar Search Engine

- Click the **Search** button in the Internet Explorer toolbar.

On the left side of the screen, the Search window will appear.

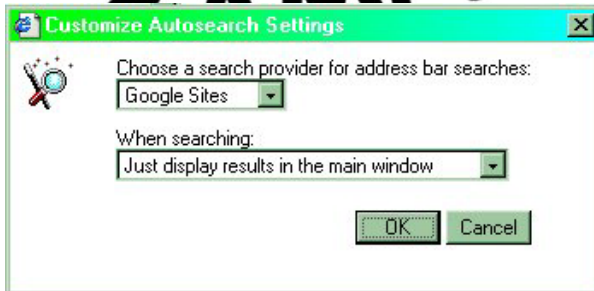


- Click the **Customize** button within the search window. The **Customized Search Settings** screen will appear. Within the screen you will see many different search engines you can use to perform Internet searches.

- Click on the **Autosearch Settings** button.

Autosearch settings

The **Customize Autosearch Settings** box will appear.



- Click the down arrow in the text box beneath the words **Choose a search provider for address bar searches**.

A listing of all available search engines will appear.

